



2W, 5W, 8W

# AM-9335 Series C-Band BUC

## Small BUCs, Big Benefits Revolutionized Engineering Design

### Features

- LED Status Indicator
- Dip Switch for Gain Control
- Impressive Gain & Gain Flatness
- Waterproof IP65 Standard
- High Frequency Stability
- Very Low Power Consumption
- Extremely Light Weight
- Weather-Proof Packaging
- Extremely Easy to Install & Operate

### Benefits

- Bicolour LED Light to Identify BUC Status Instantly
- Fast Gain Control Method Using Dip Switch
- SAVE COST with Direct Mount on Antenna Feed, Lightest in the Industry. No Cable or Waveguide Loss When Mounted Directly on Antenna Feed
- Flexibility to Have "N" or "F" Type Input Interface

### Beneficial Features (Optional)

- Built-In 10 MHz Reference
- Dip Switch for Gain Control
- Installation by Expert Engineer
- Annual Maintenance Service

### Frequency Range (MHz)

	RF	IF	LO
<b>Std C</b>	5850 - 6425	950-1525	7375 / 4900
<b>Ext-Palapa</b>	6365 - 6725	1075-1435	7800 / 5290
<b>Ext C</b>	6425 - 6725	950-1250	7675 / 5475
<b>Full C</b>	5850 - 6725	950-1825	7675 / 4900
<b>Insat C</b>	6725 - 7025	965-1265	5760
<b>Insat C (Inverted)</b>	6725 - 7025	975-1275	8000



Cert No. E08093



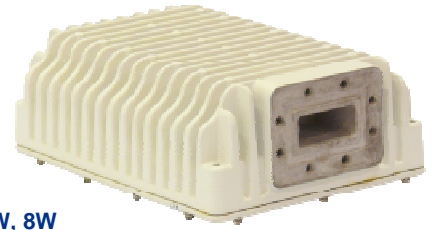
ISO 9001



ISO 14001



OHSAS 18001



2W, 5W, 8W

# AM-9335 Series C-Band BUC

## Technical Details

### RF Specifications

Input / Output Frequency	As per the frequency table on front page
Output Power P-1dB W(dBm)	2 (33), 5 (37), 8 (39)
Gain	70 dB nominal
Gain Flatness	±2dB typical
Gain Stability over Temperature	±3dB
Gain Control Range	30dB (optional)
Intermodulation Product	-27 dBc max (3dB total back-off from rated power)
Spurious	-55 dBc max
Frequency Stability over Temperature:	
Internal Reference	± 0.5 ppm
External Reference	As per external 10 MHz ref
Phase Noise:	
100 Hz	-63 dBc/Hz max
1 KHz	-73 dBc/Hz max
10 KHz	-83 dBc/Hz max
100 KHz	-93 dBc/Hz max
I/P VSWR	1.5 : 1 max
O/P VSWR	2 : 1 max

### Operating Power Requirement

Operating Voltage	24 VDC
Power Consumption (Watts)	22 / 44 / 46 max

### LED Status

Green	Normal
Red	Fault

### Input Reference

Frequency Reference	10 MHz to be supplied external via L-band cable (Internal 10 MHz ref option available)
Level	-5 to +5 dBm

### Interfaces

IF input Interface	F-type or N-type
Output Interface	CPR 137G

### Environmental Conditions

Operating Temperature	-40°C to +60°C
Humidity	0 to 100%

### Mechanical

Dimensions	175L x 130W x 60H mm / 7L x 5.2W X 2.4H inches
Weight	1.6 kg / 3.5 lbs

*\*All specifications & designs are subject to changes without notice*

*Version 201201*